

HT270/285J

SELF-PROPELLED TELESCOPIC BOOMS

Mantall®



Options Features

- Platform swing gate
- Platform alternate leverage
- Welder connecting packages
- Welder wire connecting to the platform
- Airline to platform
- Hydraulic oil cooler
- Hydraulic oil for extremely cold areas
- Pipeline for extremely cold area
- Hostile environment packages
- Anti-crash air packages
- Tool tray
- Alarm packages
- Platform work lights
- Front driving light
- Traction packages
- AC power source
- Preheater
- Cold start components
- AC generator set
- Diesel exhaust gas purification muffler
- Diesel Fireproof Star Silencer
- Air pre filter

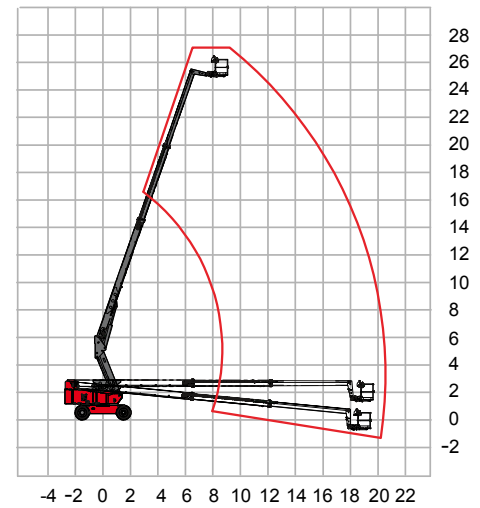
Standard Features

- Self-levelling platform
- Hydraulic rotation platform
- Hall effect fully proportional controls
- Driving confirm
- AC wiring to platform
- 360° Turntable rotation
- Horn
- Hour meter
- Tilt alarm
- Positive traction drive
- Dual Speed motor
- Emergency pump
- CAN intelligent control
- Overload sensor
- Engine restart protection
- Automatic engine failure shutdown
- Spin out engine tray

HT270/285J

MODEL	HT270	HT285J
Max. Working height	27 m	28.5 m
Max. Platform height	25 m	26.5 m
Max. Outreach	20.2 m	21.6 m
Max. Lift capacity	230 kg	
Platform size B x C x A	1.8 x 0.76 x 1.1 m	
Height - stowed D	2.8 m	
Length - stowed E	11.168 m	12.05m
Width F	2.3/2.5m	
Wheelbase G	3.0 m	
Ground clearance H	0.4 m	
Turntable rotation	360°	
Turntable tailswing	1.5 m	
Platform rotation	180°	
Jib Swing	/	130°(+75°/-55°)
Drive speed - stowed	5.1 km/h	
Drive speed - raised	1 km/h	
Gradeability	45%	
Min. Turning radius-(inside)	3.6 m	
Min. Turning radius-(outside)	6.88 m	6.88 m
Drive wheels number	4	
Steering wheel number	2	
Controls	Electro Hydraulic proportional control	
System voltage	DC 12V	
Hydraulic tank capacity	180 L	
Fuel tank capacity	130 L	
Tire size	36 x 14-20 Rubber solid tires	
Power	Cummins engine QSF2.8T 54kW	
Total weight(With oscillating axle)	16100 kg	16600 kg
Total weight(Without oscillating axle)	15400 kg	15500 kg

Range of motion HT270



Range of motion HT285J

